

# HUNTINGTON LAKES SECTION ONE

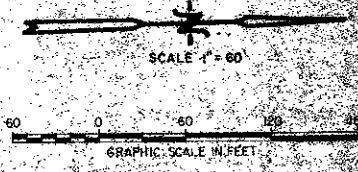
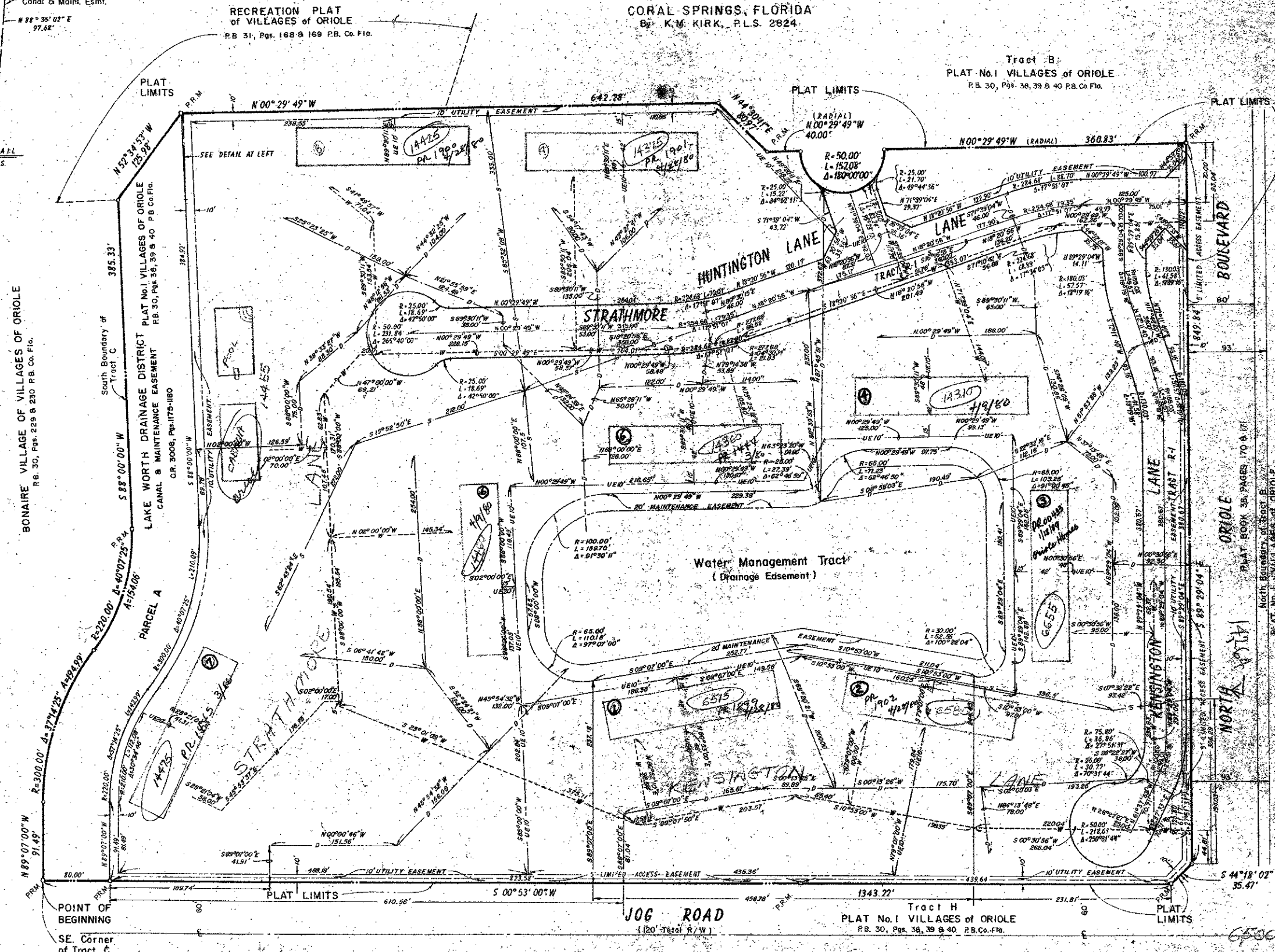
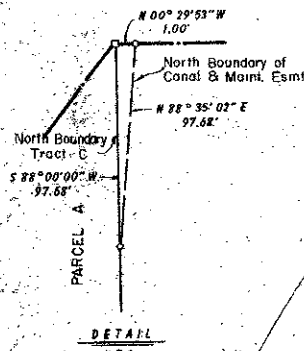
A PART OF A P.U.D.  
BEING A REPLAT OF A PORTION OF TRACTS B, C, PLAT No. 1  
VILLAGES OF ORIOLE (P.B. 30, PAGES 38, 39 & 40)  
SECTIONS 15 & 16, TOWNSHIP 46 SOUTH, RANGE 42 EAST

PALM BEACH COUNTY, FLORIDA

PREPARED BY

**BROOME AND FARINA, INC.**  
ENGINEERS - PLANNERS - SURVEYORS  
CORAL SPRINGS, FLORIDA

By: K.M. KIRK, P.L.S. 2824



**LEGEND**

- 10' UTILITY EASEMENT
- 20' MAINTENANCE EASEMENT
- 30' LIMITED ACCESS EASEMENT
- 10' UTILITY EASEMENT

0326-309  
**Huntington Lakes Ex. #1**  
BUILDING LOCATIONS  
ARE APPROXIMATE

**38**  
**195**

**AREA TABULATIONS**

LOT AREA	2,556 ACRES
STREET R/W AREA	2,939 ACRES
GROSS AREA	26,395 ACRES